

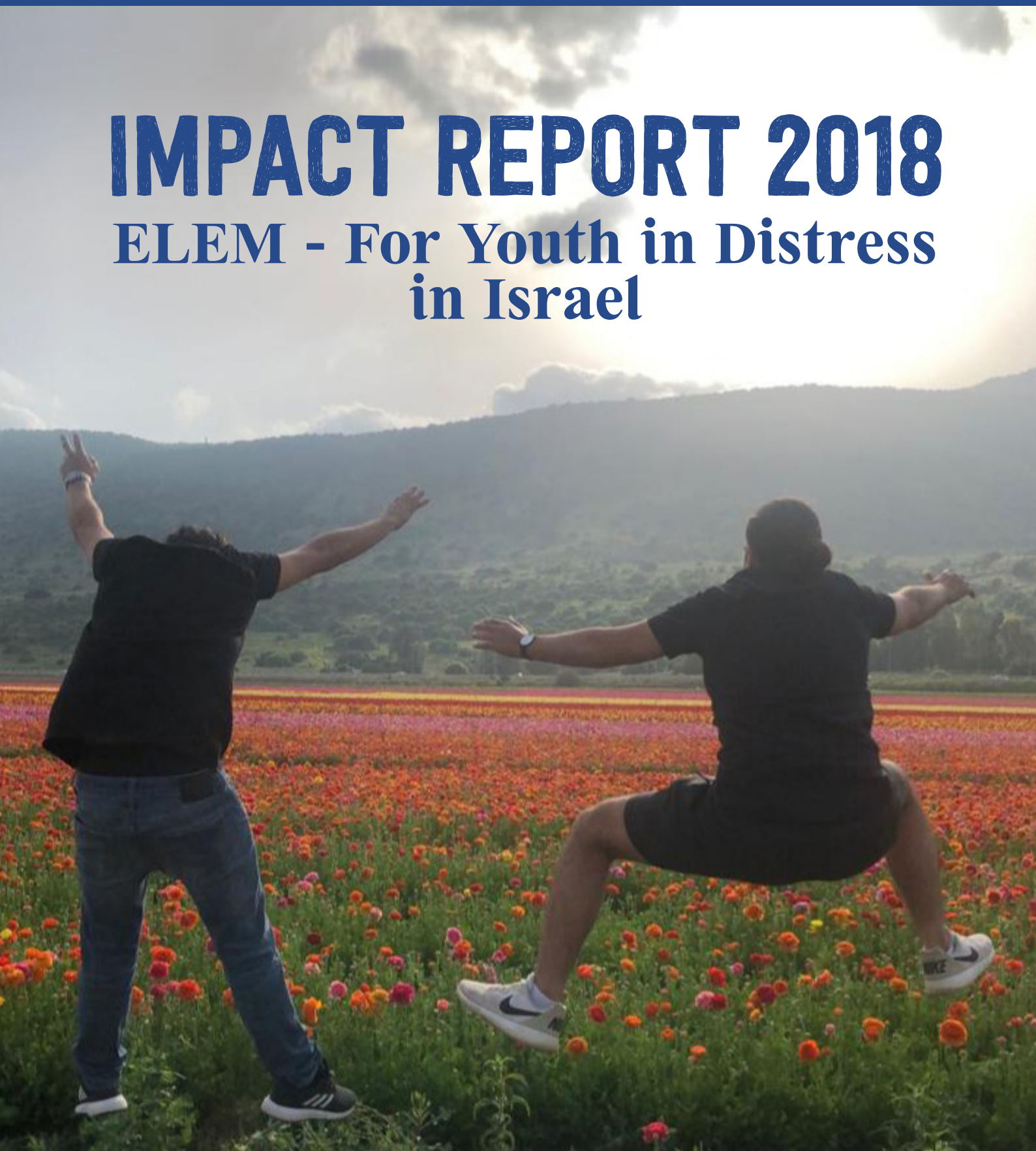
ELEM עלם

העמותה לנוער במצבי סיכון (ע"ר) youth in distress



IMPACT REPORT 2018

**ELEM - For Youth in Distress
in Israel**



OPENING REMARKS

OPENING REMARKS

ELEM's Vision

Help teens and young people at risk to handle their hardships, overcome risks, and grow into citizens who contribute to themselves, their communities and to Israel.

ELEM was founded 35 years ago to help at-risk youth out of a sense of responsibility and in order to improve the lives of young people. This year, the organization's 300 employees and 2,000 volunteers met 21,000 young people through outreach, street work, drop-in centers, on the Internet and in programs for independent living and extreme risk.

We are proud to have expanded our drop-in centers and shelters for homeless youth this year. In Tel Aviv, we expanded services at "Someone to Run With," becoming the first 24/7 shelter for homeless young men. In Dimona, we opened a branch of our "Halev" program, a center for sexually exploited young women.

This year, ELEM saw serious phenomena among young people: ELEM saw drug use at a younger age, sexual abuse and violence in the home, the community and online. We work to respond to these issues at all our centers nationwide.

In light of the complex security situation in the Gaza border region and in southern Israel, we saw young people with severe anxiety, trauma and difficulty functioning in addition to typical adolescent problems. ELEM's staff and volunteers in the south helped hundreds of teens with services tailored to their situation.

At ELEM's 35th anniversary gala, we presented

founders Ann and Kenny Bialkin with lifetime achievement awards. Ann and Kenny, who came from the United States for the ceremony, were joined at the event by Israel's business community, ELEM's donors and partners.

ELEM values its partnership with the business community, which both facilitates the work ELEM does and emphasizes the importance of mutual responsibility and the creation of a compassionate society. We are grateful to the corporations and donors for their generosity and involvement throughout the years.

ELEM is also grateful to the Social Services Ministry for many years of close and productive partnership. We would also like to thank the Education, Immigrant Absorption and Health ministries as well as local governments for their unfaltering support.

From the bottom of our hearts, we thank our dedicated staff and volunteers who are always there for our teens and young people, giving them the strength to overcome hardships and the hope for a better future.

In this annual report, presented to Israel's President Reuven Rivlin, you will find the prominent phenomena and central trends in the lives of at-risk teens and young people in Israel, as well as ELEM's activities nationwide over the course of 2018.

ELEM's professionals, together with 2000 volunteers work patiently to forge relationships with some of Israel's most vulnerable youth, enabling them to turn around the lives of 81,000 youths in 82 different programs in 42 towns (including ELEM's on-line outreach programs). We have improved our methods of data collection in our on-line programs and are now able present the numbers of youths that developed tight bonds with ELEM. In the passed our analytics only allowed us to present a gross number that showed how many youths reached out to us on-line. Not every youth who reaches out to us once creates an instant bond but it does provide us a window into how many young people are in need of services.

ELEM is dedicated to transforming the lives of troubled youths in Israel. Our innovative programs don't require referrals and provides safe spaces for counseling, mentoring and job training. Due to the support of our donors and partnerships, we are succeeding in reaching this goal. ELEM is making a strong impact but it needs to do better, as our analytics indicate there are still so many more struggling youth that we are not able to reach due to a lack of manpower and finances. In the coming

year, our goal is to close this gap.

ELEM treats all youth as "rays of hope", offering respect and caring in a non-judgmental way. We engage them in their own environments, on their own terms. This one small act gives them the opportunity to feel the respect of being acknowledged and a little bit cared for, unconditionally- often for the first time.

Many of ELEM's youths have been abused and betrayed by every adult they have ever known; but repeated, dependable small acts of kindnesses fosters a relationship of trust and mutual respect between the struggling youths and ELEM workers. When this occurs, ELEM can then bring these young people into higher levels of care. ELEM doesn't stop there. We stay with each youth as they continue on their journey towards health and integrating back into Israeli society.

Thank you for joining ELEM on this journey to ensure that struggling high-risk youth in Israel will always have ELEM to shepherd their way back to a productive life. The mission is to guide the at-risk youths ***off the streets and on to life.***

With gratitude,

Yours,



Shlomo Yanai
Chairman of the Board



Nava Barak
President



Inbal Dor Kerbel
Executive Director

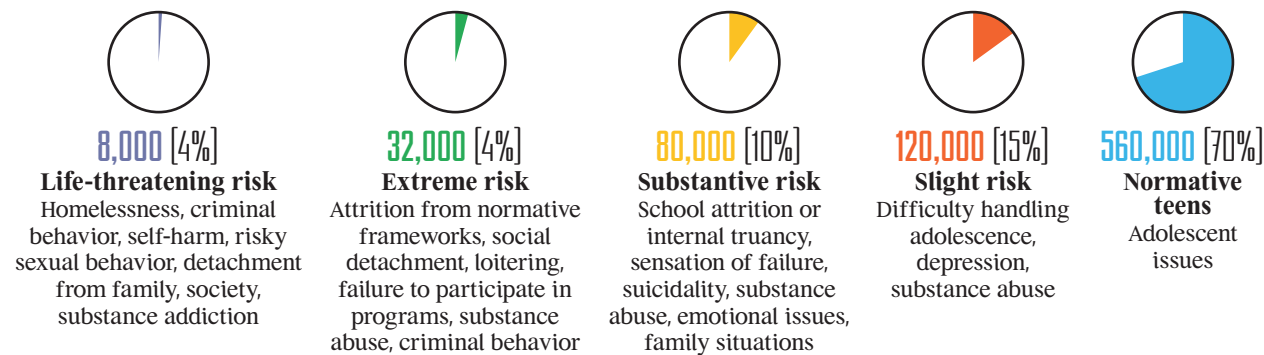


Lenore Ruben
President ELEM USA



Ann Bialkin
Chairman/Founder

The Risk Spectrum



ELEM by the numbers - 2018

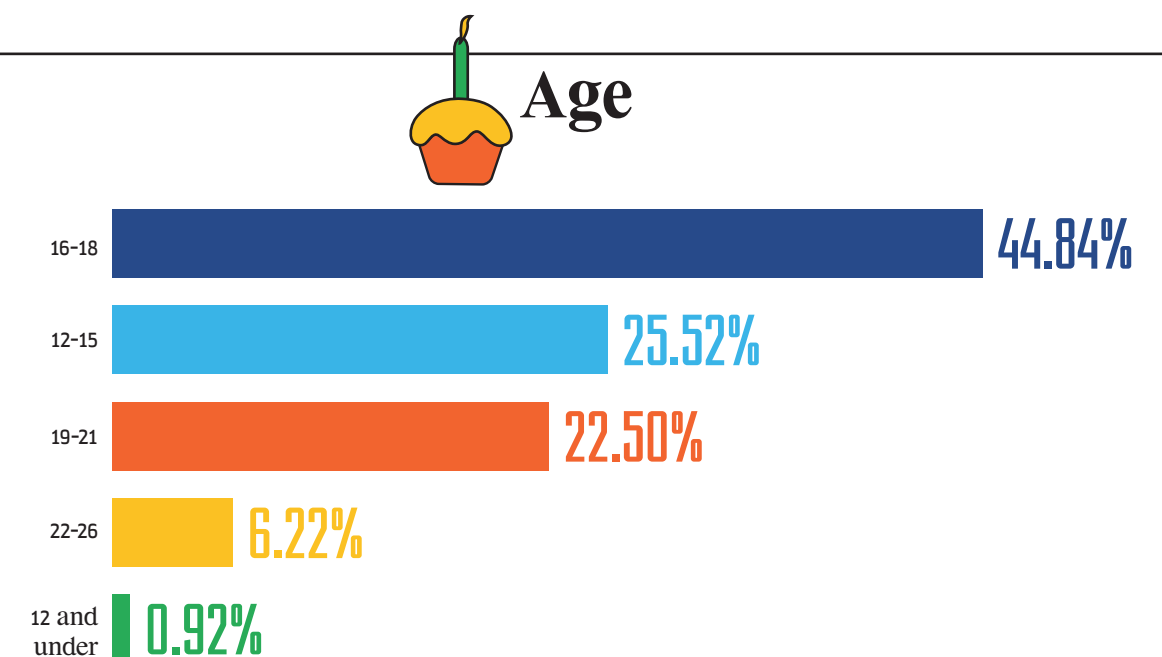
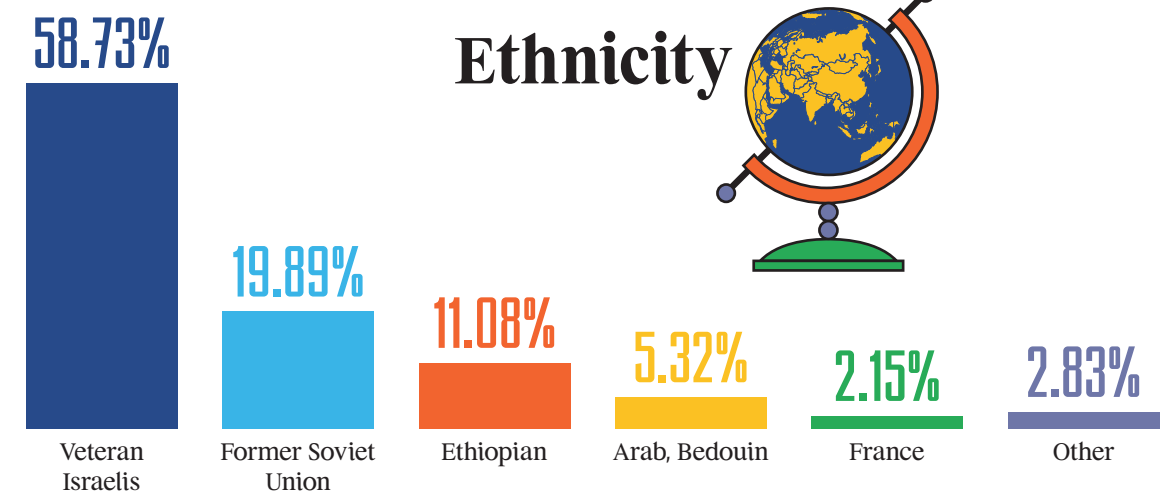
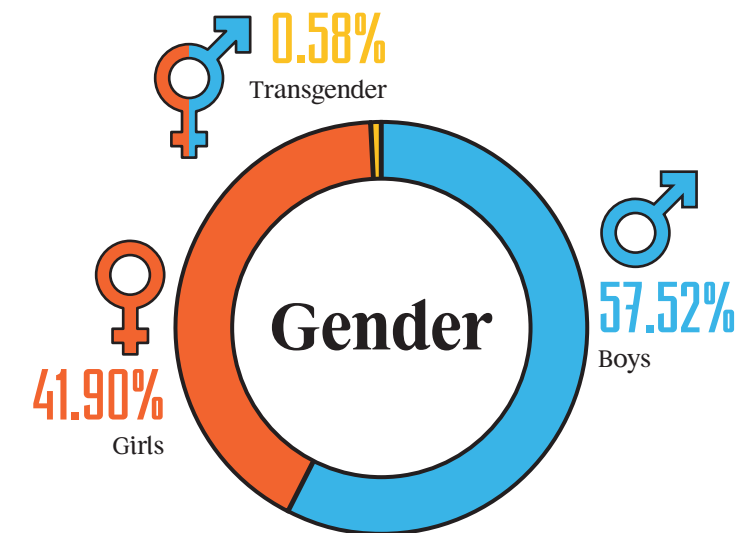


In Israel there are approximately 800,000 teens between the ages of 12-18. About a quarter of them are at risk of various kinds. In 2018, ELEM staff and volunteers met 21,000 teens and young people and provided a real address and assistance to pave their way back into their communities.

The teens ELEM meets face a broad range of distress from normative adolescent crises through much more complex situations, including school attrition, difficulties with immigration, social and family issues, questions relating to sexual identity, religious identity and belonging to community, drug and alcohol addictions, violence, criminal behavior, sexual exploitation, sexual abuse, and severe disconnection such as sexual exploitation or homelessness.

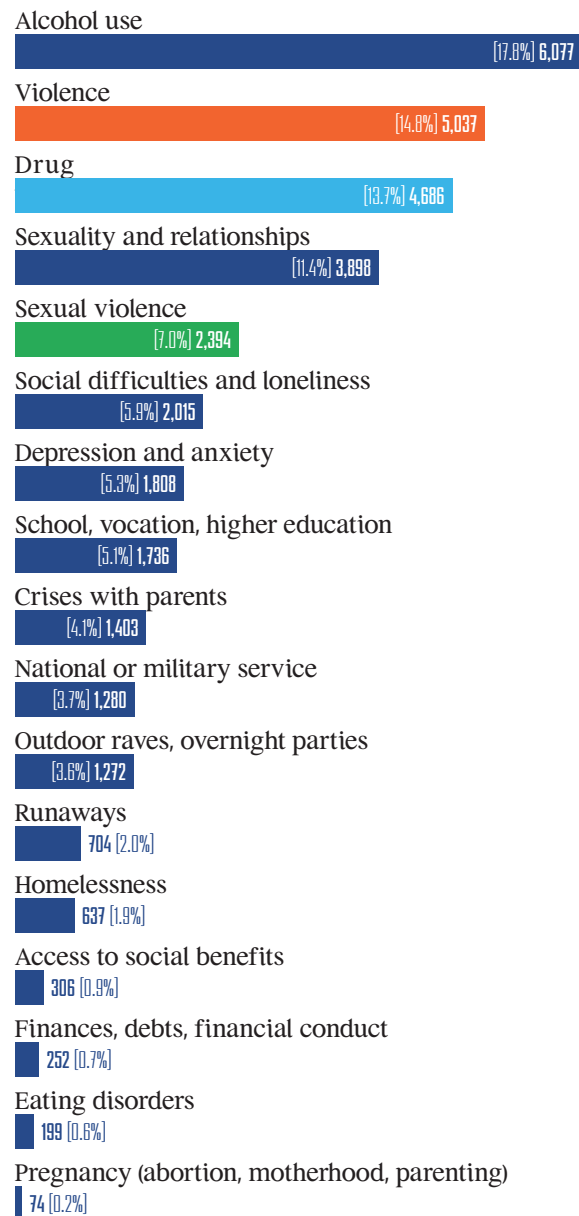
ELEM specializes in identifying the hardships facing young people in Israel, and in developing innovative and relevant responses tailored to different populations. ELEM operates 82 projects in 42 different towns nationwide.

ELEM employs 285 top-notch professionals in counseling and treatment, along with 2,000 volunteers from all walks of life. ELEM's staff and volunteers go into the field and meet youth on their own turf: in schools, communities and online, in field work, during school vacations and at night on the streets and at entertainment hotspots.



KEY ISSUES IN 2018

In 2018, the youth who turned to ELEM were younger and more teenagers came to ELEM with a variety of risk situations.



The three key issues we saw this year were:

1. Broader drug use among teens

One in every four teens or young people who approached ELEM in 2018 used drugs.

The use of drugs among teens and young people in Israel is widespread and worrying. In the face of greater and greater distress, more intensive drug use provides a greater escape from a harsh day-to-day reality.

2018 saw more requests from teens aged 12-18 and more questions surrounding substance abuse. ELEM saw a higher rate of intensive drug use.

ELEM's drop-in centers in **outlying areas** recorded drug use in **half of the teens** who visited the centers.

Social media makes drugs very accessible to the public at large, therefore making them much more accessible to teens who had trouble attaining drugs in the past. The Internet is everywhere, offering information about drugs that are becoming easier to acquire. This is another factor in the increased drug use among teens.

The open dialogue about drug use in society in general has made the subject legitimate and normative among teens and young people as well. In the past year, we have seen that the public atmosphere, open discussion and undisguised drug use in public spaces, have led more teens to approach ELEM staff and discuss drug use.

ELEM treats the increase in substance use in a variety of ways: through individual counseling, assistance in accessing community rehabilitation services, group programs at drop-in centers, and therapy for teens who are frequent users or addicts. In addition, ELEM runs a unique program - Good People - which assists teens at outdoor raves in reducing harm and helps those facing psychotic crises resulting from the use of mind-altering substances.

All this assistance is characterized by accessibility, an open door to every teen and outreach on their turf.

2. Increase in violence toward teens in family, community and online settings

One in every five teens or young people who approached ELEM in 2018 was facing violence at home, online or in their community.

While this statistic is true of most of the youth ELEM meets, among youth at extreme risk, the numbers rise dramatically to **one in two** young people facing violence.

Teens are more exposed to uninhibited, violent and unrestricted language on social media. The lack of normative, influential adult figures in this space affects the increasing violence among teens. In addition, they feel distanced from their parents and from the family unit. Teens, developing their identity in the adolescent years, are exposed to violent language online, where they are alone, without adult supervision. This year, more teens used social media to share stories of violence at home.

ELEM believes that violence of various kinds requires a variety of integrated solutions: first aid, listening and emotional support, group activities that address all levels of violence, as well as seeking continued treatment from relevant authorities, welfare services and the education system. In addition, at ELEM Digital, teens choose to share personal problems that they do not share offline, overcoming the barrier of a face-to-face encounter, which then allows us to reach them and help them outside the online world too.

ELEM operates in a variety of spheres and our teams can go anywhere, from the streets to drop-in centers to online, reaching youth nationwide and across the risk continuum. All this offers our organization a broad view of phenomena and allows us to locate and support young people at risk as well as shine a spotlight on the evolving risks.

3. Increased sexual violence among teens and young people

Sexual violence among teens and young people is worsening and spreading throughout Israeli society.

This widespread phenomenon is underreported among normative teens, at-risk teens and society at large.

Among teens and young people at extreme risk, we found that **four out of five** face sexual violence.

ELEM's sexual violence division treats victims as well as abusers and deals with sexual violence extensively.

The rate of online reports of sexual abuse was twice as high this year over last. Most of the online reports were from teen girls and young women.

The subject of sex and sexuality is of substantial importance in the lives of teens. One in three teens who were in contact with ELEM teams this year sought advice on sex and sexuality, an increase of 20% over 2017.

ELEM runs various programs dealing with sexual violence. The assistance begins with outreach, identification and prevention starting in our drop-in centers and outreach vans. ELEM emphasizes reducing harm and ongoing discussion of healthy sexuality. In addition, ELEM provides unique support and treatment for victims of sexual violence and for sexual abusers.

ELEM has recently called for the establishment of a national program on sexual violence among teens. In 2018, ELEM presented a plan for a comprehensive program against sexual violence among teens and young people to lawmakers and other authorities. The plan outlines an inter-ministerial program for dealing with all aspects of sexual violence: prevention, identification, enforcement and rehabilitation.



ELEM is committed to social activism alongside our ongoing partnership with national and local government. The organization is constantly involved in and initiates activism for social change on the national level.

During the course of 2018, ELEM was involved in several efforts to create social change:

1. Legislation and policy change: During 2018, there were several substantial meetings and field visits for senior officials and key positions in forming public policy such as cabinet ministers, lawmakers, members of Knesset committees, and ministry directors general.

- **ELEM is an active participant in the Knesset Subcommittee on Combating Trafficking in Women and Prostitution chaired by Knesset member Aliza Lavie.** This constitutes part of ELEM's partnership with the Ministry of Labor and Social Services.

ELEM worked this year to promote a bill criminalizing the use of prostitution in Israel. This is part of a multi-year effort by the organization to cope with the issue, including developing unique models to reach out to, identify and intervene with teens and young people who are sexually exploited.

- **Members of the Knesset Subcommittee on Combating Trafficking in Women and Prostitution - including MKs Aliza Lavie, Meirav Ben-Ari and Mossi Raz -** visited ELEM's shelter for homeless young women in Jerusalem. The visit highlighted the fact that as ELEM expands its work with homeless young men and women, we discover additional needs, and conduct ongoing dialogue with the Ministry of Labor and Social Services and with local governments in order to provide viable immediate and long-term responses.

- **Advancing the fight against sexual violence with MK Orly Levy-Abekasis.** This year ELEM pushed for the establishment of a comprehensive program against sexual violence among teens and young people. The plan outlines an inter-ministerial program for coping with all aspects of sexual violence. MK Levy-Abekasis visited ELEM's "Real Home," a drop-in center for young women survivors of long-term childhood sexual violence. Levy-Abekasis spoke with the young women and heard about the hardships they face in the hopes of advancing programs that will help in their day-to-day struggles.

- **Promoting awareness of the need to limit the damage resulting from drug use at outdoor raves, through the Knesset Committee on Drug and Alcohol Abuse,**

headed by MK Tamar Zandberg. ELEM, together with a number of organizations, raised awareness of the need for programs that reduce harm caused by the use of mind-altering substances at raves. ELEM participated in professional conferences and spoke at Knesset committee meetings after a series of deaths associated with the rave scene this year.

- **Participation in the Knesset Committee for the Rights of the Child to promote equal rights for teens and young people of Ethiopian descent.** ELEM raised issues facing these youth in order to place the issue on the national social agenda, with an emphasis on risk, in order to promote action and solutions.

2. Involvement and influence of teens, young people and ELEM graduates:

- **ELEM's annual conference this year focused on "Sharing, participation and involvement in work with teens and young people,"** and covered the subject of cooperation between professionals and youth in the treatment process. The conference was held in collaboration with the youth studies program of the social work department at Ben-Gurion University of the Negev. Close to 500 counselors, educators and academics as well as ELEM graduates, took part.

- **Activist community:** This year, in partnership with the National Insurance Foundation and the Gandyr Foundation, ELEM established a program in Jerusalem and Tel Aviv for its graduates working for social change.

- **Teen volunteers:** As part of ELEM's volunteer structure, 300 teen boys and girls volunteer at various projects nationwide. Teen volunteering promotes important values for them and for society, such as openness and sensitivity to their surroundings, accepting responsibility, initiative and motivation for social change.

3. Active participation of all ELEM projects in promoting social change:

As part of the national struggle against domestic violence and the murder of women, ELEM staff and volunteers as well as our teens and young people joined thousands who took to the streets to demonstrate and took part in special activities and strikes. ELEM will continue to fight for the lives of young girls and young women.



ELEM considers care for at-risk youth to be the responsibility of all of Israeli society.

ELEM works to enlist the community in real partnership in social endeavors. Our volunteers, part of every ELEM project, constitute the most significant community involvement.

ELEM's volunteer program develops, recruits, trains and mentors our volunteers, on the community and national level. The volunteers have crucial influence over the teens and young people. Volunteering also has crucial impact on the volunteers themselves and on society at large.

ELEM is an active partner in national efforts and policy-making regarding volunteerism in Israel.

In 2018, ELEM had 2,000 volunteers: 1,500 volunteers, of whom **300** were youth, worked in ELEM's 82 projects. Nearly **500** additional volunteers were part of corporate volunteer programs.

Substantial achievements:

1. Corporate volunteer programs: During the year, ELEM conducted several volunteer activities in cooperation with dozens of business including telecom giant Bezeq, eBay, Adama Agricultural Solutions, Unilever Israel and more. The volunteering partnerships included mentoring, employing young people, scholarships and donated space for conferences and workshops. In addition, corporate volunteers collaborated on major events such as "Good Deeds Day."

2. Workshops and conferences to promote volunteerism

- This year, ELEM held a major conference for all managers on "Innovation in Volunteerism." ELEM's Volunteer Committee, chaired by Dr. Aharon York, helped plan the content and produce the event.

- Workshops were held for all the volunteers in ELEM's outreach van and extreme risk programs.
- The workshops empowered the volunteers, raised their visibility in their fields of activity and added to their sense of belonging and personal contribution.
- ELEM held Volunteer Appreciation Events in dozens of our projects this year.

3. Governing committees

- New volunteers became involved in senior positions in the organization and jointed various governing committees including the Board of Directors, the Professional Committee, the Audit Committee, the Human Resources Committee and the Volunteers Committee.

- Members of the Volunteers and Human Resources committees played substantial roles in the oversight and professional management of ELEM's human capital.

4 Implementing the Code of Ethics: ELEM's volunteers were partners in writing the organization's Code of Ethics. Implementation of the code reached an important milestone this year with its publication. Every new volunteer at ELEM signs and undertakes to follow this code.

To volunteer, contact: tamib@elem.org.il



DROP-IN CENTERS

Program director: Irit Aloni

4,958
Teens and young people

Gender

Teen boys,
young men



2,879

Teen girls,
young women



1,956

Transgender



25

Ethnicity

Veteran Israeli

2,097

FSU

1,535

Ethiopian

660

Arab, Bedouin

418

French

50

Other

237



In Israel, many teens are on the risk continuum. Some face complex hardships and do not receive responses that are appropriate to their needs. ELEM's nationwide network of drop-in centers works to curb risk and prevent teens' descent to extreme risk, enabling their personal and identity development

ELEM's drop-in centers are a safe space for teens, allowing them to develop and strengthen beneficial relationships with peers and with a significant adult. Teens who choose to come to one of ELEM's drop-in centers find a listening ear and a sense of belonging. Staff at the drop-in centers guide the teens and are partners in their maturation over time. The centers hold a broad range of small-group activities as well as various workshops. These give the teens tools for self-acceptance and for developing their identities.

"I had some very difficult moments over the last year, when I felt like I was angry at the entire world and I wanted to break it. The center director and the volunteers were with me and guided me even when I came to the center angry. They looked forward to seeing me every time. They made me feel loved and like I always had a place to go. Sometimes I feel like this is the only place that I can talk without being told what to do, without being kicked out, without being ignored."

Noam, 17, ELEM's "Hafuch Holon" drop-in center

More than 5,000 teens were regular visitors to ELEM's drop-in centers in 2018.

ELEM manages 26 drop-in centers in 18 towns and cities nationwide according to four unique models:

- **"Hafuch al hafuch"** - urban youth centers open in the afternoon and evening hours and that provide a safe space for teens. Hafuch centers are located all over Israel in: Kiryat Shmona, Tsfat, Nazareth Illit, Kiryat Yam, Netanya, Tel Aviv, Holon, Ashdod, Kiryat Gat and Sderot.
- **"Migdalar"** - neighborhood youth centers for teens from various cultures open in the afternoon and evening hours and that provide a safe space and tailor their work to cultures and customs. Migdalar centers are located in: Acre, Petach Tikva, Holon, Rehovot and Kiryat Malachi.
- **"Finjan"** - one-of-a-kind youth centers that provide a safe space for teens from a number of Bedouin villages in the Negev's Neveh Midbar

region including: Qasr el-Ser, Abu Karinat, Bir Hadaj and Abu Talul (for girls).

- **"Shtluk"** - an innovative informal youth center model designed to prevent school attrition and reduce risk behaviors. Shtluk projects operate in a number of schools nationwide including in: Kiryat Shmona, Nazareth Illit, Holon, Ashdod, Kiryat Gat and Qasr el-Ser.

"I feel from the very first day I walked into Migdalar, my heart has grown. Because a few people who help me be and stay strong and sure of myself have made their way into my heart."

A., teen girl, Migdalar Rehovot

Key phenomena ELEM has seen at drop-in centers this year:



About 80% of teens at the drop-in centers reported using alcohol or drugs in 2018, an increase of 45% over 2017. The increasing public debate, mostly over drug use, has normalized the subject for teens and drugs have become part of their normative routine. This is evident in drug use in public space as a social convention at meetups and social events. In addition, social media have increase access to drugs nationwide, including in outlying and rural areas and including to younger ages than in the past.



About 52% reported social difficulties, loneliness and distance. Teens increasing use of social media has increased their vulnerability. In many instances, teens function alone online, their world insulated from the adults around them. Many teen boys and girls lack a responsible adult in their lives. As a result of these technological changes, there is a widening gap between the life experience of teens and that of the adults who would be present and supervising the youths' world. As a result, teens feel invisible, misunderstood, lacking support and alienated.



About 35% of teens at the drop-in centers asked staff and volunteers about sex and sexuality, an increase of about 19% over such questions in 2017. We see an increase in open discussion of sexual relations and sexuality among teens. On the one hand, this allows healthy exploration of the subject. On the other hand, we see blurred boundaries and loss of privacy in intimate relations as they become public knowledge. There is confusion between relationships characterized by mutuality and those characterized by exploitation.

Successes and substantial achievements:

2,402 new teens were identified this year by youth center staff and received responses to their needs.

879 teens reported an improvement in their ability to develop and maintain social ties as a result of the youth centers.

442 youth center graduates integrated into the army, national service and the work force.

28 youth center volunteers are graduates who returned to counseling and volunteering at the centers from which they came, choosing to help at-risk teens at the place that helped them when they were in distress.

Age

16-18

2,208

14-15

1,561

12-13

623

19-21

525

12 and under

8

22-26

7



Teens tell ELEM

Alcohol use

2,232

Violence

1,872

Sex and sexuality

1,804

Drug use

1,733

Social problems, loneliness

1,032

School, vocation, academics

993

Depression, anxiety

722

Crisis with parents

535

Attending raves

418

Sexual violence

374

STREETWORK

Program director: Roy Homri

10,543

Teens and young people

Gender

Teen boys,
young men



6,616

Teen girls,
young women



3,820

Transgender



15

Ethnicity

Veteran Israeli

5,999

FSU

1,775

Ethiopian

1,304

Arab, Bedouin

380

French

187

Other

250



"I have so many happy things to share and finally tell you. I am getting stronger due to the hand you reached out to me, your listening ear and your heart that opened up to me. I won't say I don't have any suicidal thoughts at all, but the attempts have stopped due to you. I am working, getting treatment and I know that the road is long but it is good and brings joy. Thank you."

H., young woman, Jerusalem outreach van

Staff and volunteers on ELEM's "Street Address" outreach vans go to teens and young people where they are located. ELEM meets them in parks, town squares, nightlife hotspots, alleys, hideouts and other places. The vans go out on the streets in order to meet the young people, make a connection, and support them in times of crisis and emergencies, in order to help them begin to make positive change in their lives. Outreach van staff and volunteers locate teens and young people and offer them a welcoming space. In most cases, the connections on the street become significant and ongoing and helps the teens return to a normative life. Teens who come to ELEM's outreach vans find a comfortable place to sit, warm beverages and refreshments, a phone, helpful brochures, first aid and contraceptives.

Van teams met more than 10,000 teens on the streets in 2018.

ELEM's vans operate in 24 towns and cities and open more than 80 pop-up centers in regular locations each week.

We have a substantive relationship with **75%** of the teens and young people including repeat visits and guidance in long-term processes or interventions.

70% of teens were under age 18

36% were girls or young women

33% were new to ELEM in 2018

"I met my heroines two years ago in a park in Ashdod. They came to us: 'Hey, come sit with us. We'll talk and laugh a little, what do you think?' That's how I met my second family, my heroines from ELEM. Just so you don't misunderstand: ELEM isn't just an NGO for at-risk youth, it works so young people don't end up at risk at all."

Your parents are getting a divorce? A friend told you a secret that worries you and you don't know what to do? Or you're just stressed out by an important test? You have someone to talk to and someone to turn to: to ELEM. They will just try to talk and encourage you and best part is that everyone in the conversation is equal. No one is wrong, everyone has a position, and everything is magical! You are equal, you can do it, you are with family, you are with ELEM."

T., 16, teen girl at the Ashdod van

Topics and risk behaviors that stood out this year:



34% of teens reported intensive drug use.



45% of the youth reported alcohol consumption.



20% of the teen boys and girls received counseling from the street teams on sexuality and relationships, safer sex, and issues of sexual, emotional and physical violence.



12% were dealing with family crises, were runaways or homeless, a phenomenon that we saw increasing on the streets in the past year. This year outreach teams located more than 180 youth experiencing a form of homelessness, 50% of whom were under age 18 and half of whom were girls.

Unique responses developed by ELEM's streetwork teams in recent years

"Good People" - Every year we see more and more teens and young people participating in outdoor raves and trance parties in rented spaces. The lack of adult presence at these events increases the risk behavior from substance and alcohol abuse that can end in tragedy, as well as sexual violence that take place at the parties.

The Good People project, part of ELEM's streetwork division, provides a response to youth having psychotic crises due to use of mind-altering substances during the parties. Good People staff and volunteers provide initial emotional support as soon as someone feels unwell. The project also conducts outreach to at-risk youth at the parties, and offers ongoing relationships and access to various services as needed.

This year "Good People" helped **300 young men and women** who experienced psychotic crises during outdoor raves, about **10%** of whom were in serious crisis situations.

Expanding work in the ultra-Orthodox community - in recent years we have expanded our outreach work in the ultra-Orthodox community, adding unique projects. One project conducted this year is "Ateret Tiferet" which assists at-risk teen girls and young women in ultra-Orthodox society. The project seeks to locate the girls, build their trust, and provide ongoing personal guidance. Outreach is conducted on the streets and in ultra-Orthodox girls high schools with great sensitivity.

In the past year we have recruited and trained 30 ultra-Orthodox volunteers in this outreach program.



Age

16-18

5,250

19-21

2,361

14-15

1,552

22-26

866

12-13

251

12 and under

101



Teens tell ELEM

Alcohol use

3,292

Drug use

2,504

Sex and sexuality

1,472

Violence

1,178

Attending raves

768

National, military service

548

Crisis with parents

465

Sexual violence

416

Social problems, loneliness

323

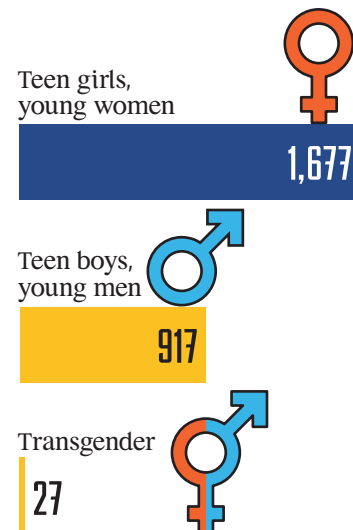
School, vocation, academics

297

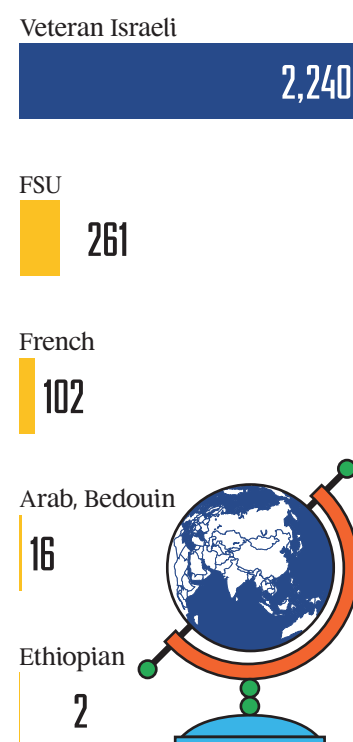
60,000

Teens used ELEM Digital

Gender



Ethnicity



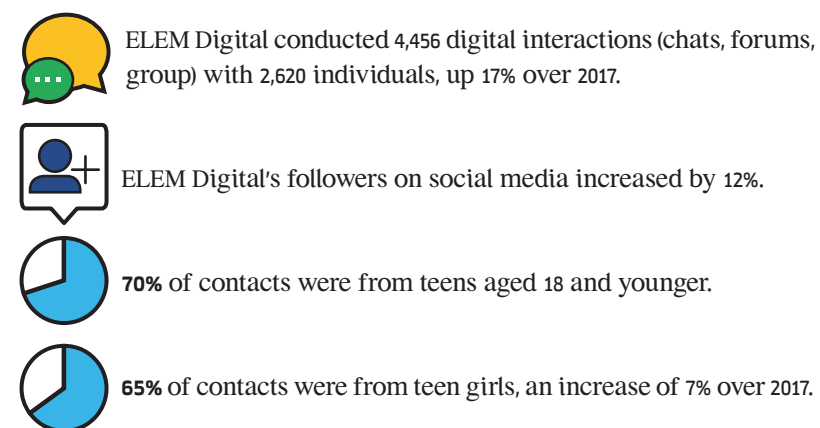
Many teens and young people experience distress and need guidance and listening ear. They avoid seeking help in person and turn to the Internet anonymously in order to find support and guidance. In an age of violence and social isolation, teens and young people find refuge online. The Internet allows them to bypass barriers in seeking help personally and is accessible from anywhere, at any time and from any computer.

ELEM Digital's system (www.yelem.org.il) provides information, counseling and emotional support online to youth in distress. The system also uses distinctive technology to scan and locate youth who express distress online and reaches out to them to assist them.

"For several months, ELEM Digital's chat was in contact with an 18 year old girl who turned to us due to sexual abuse by a family member. After a family function at which she met her abuser, she told us over the chat that she was attempting suicide at that moment as she could no longer bear the abuse, the secret and the loneliness. In a real-time intervention, we convinced her to contact the authorities handling her case. The teen did call her social worker who accompanied her to the emergency room. A few weeks later, the teen updated us through the chat that she was receiving appropriate psychiatric care."

An ELEM Digital staffer

About 60,000 teens contacted ELEM Digital in 2018 (www.yelem.org.il)

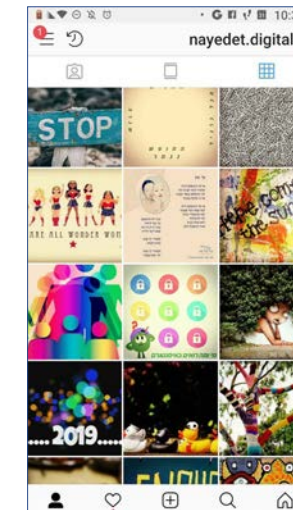


ELEM Digital's online location system:

- This year the system identified 630 teens and young people in distress.
- These identifications led to 546 initial interventions.
- 58 of these incidents developed into ongoing intervention.

ELEM Digital's system assists teens and young people online through two channels:

- Reactive channel** - Receiving requests from youth through digital tools: on Facebook, Instagram, in online support chats, in virtual



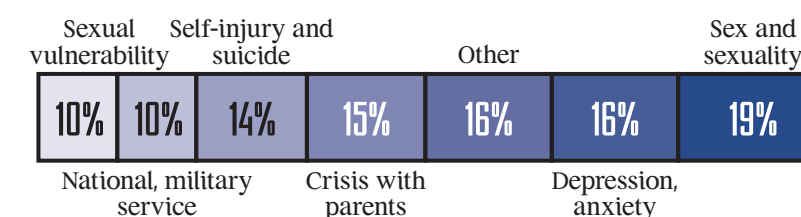
counseling rooms staffed by professionals offering anonymous one-on-one counseling, in forums that mimic group therapy and enable teens to consult with professionals and share distress as well as sending questions via email. In addition, ELEM opened a new Facebook group for teens and young women up to age 21. The group is closed and facilitates discussion support and sharing. The group is administered and guided by professional women and has about 350 members.

- Proactive channel** - Locating at-risk teens online using advanced technology to screen risk keywords in groups, forums and relevant sites, proactive intervention by professionals in crisis situations. ELEM has cooperated in recent years with Vigo, which provides the platform for scanning public sites and relevant open groups relying on search terms.

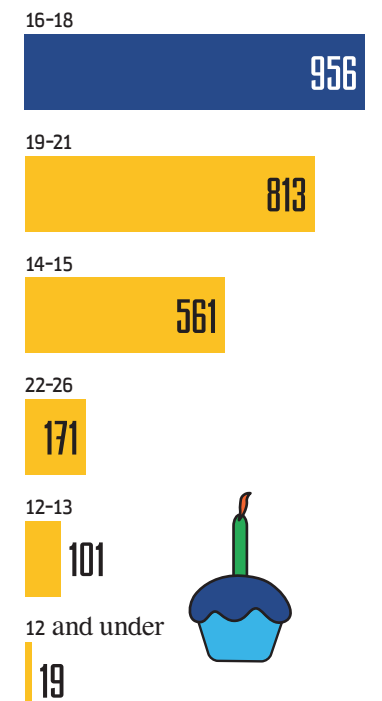
In addition to ELEM's innovative tracing abilities, ELEM Digital constitutes a platform for online assistance and guidance. It enables ELEM to respond both in the real world and directly in the online world. Sometimes that response comes in the form of ELEM Digital staff and volunteers directing the troubled teen to ELEM projects in the field or to local social services. The connections between online and offline are also evident as ELEM professionals in the field treat issues the teens raise online such as suicidal thoughts, sexual abuse in the home and more.

In recent years, ELEM Digital has helped more teen girls than teen boys, with girls comprising about 65% of requests. Teen girls and young women find it easier to share their thoughts and feelings online than in real life. Writing online enables them to open up more quickly and at a more personal level. ELEM's Facebook group "Fireflies" offers space to tell, share, ask and receive support and guidance.

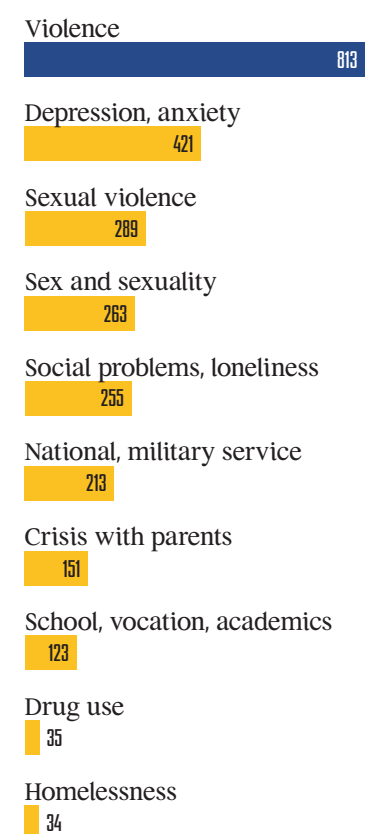
Central issues teens raised on ELEM Digital in 2018



Age



Teens tell ELEM



EMPLOYMENT AND MENTORING

Program director: Tami Nachmias

980

Teens and young people

Gender

Teen boys,
young men



616

Teen girls,
young women



318

Transgender



3

Ethnicity

Veteran Israeli

652

FSU

86

Ethiopian

83

French

63

Arab, Bedouin

62

Other

13



"I didn't have a skill or experience and I ended up on the street. Then I met a new friend from Haifa who introduced me to ELEM and that was the start of my employment journey. Thanks to ELEM I entered a medical secretary course at a public college and got financial assistance. Most of all, I got confidence, knowledge and strength. I learned it is possible to overcome difficulties - with guidance, assistance and a lot of motivation."

N., a graduate of ELEM's employability training and independent living programs

At-risk teens and young people are often cut off from family and peer support systems or treatment programs. Their environment and the lack of support services leads them to lack life skills necessary to fit into society.

ELEM's employment and mentoring staff provide them with skills to manage independent living as well as long-term mentoring as they enter new life situations such as employment, civil or military service, and academic studies.

ELEM's employment and mentoring division is comprised of a number of nationwide programs

- **Dependence to Independence** - Consulting and mentoring program for graduates of Youth Protective Services' boarding schools. The program provides tools for successful, independent living. **About 500 young people utilized the program** in 2018.

"Dependence to Independence" is knowing there is someone who will listen to me no matter where I go, it is someone who will always help me understand what I want to do and how to get there."

D., graduate of Dependence to Independence

- **Employability training** - Program for teens who have dropped out of formal education, provides a variety of services such as one-on-one mentoring with volunteers, assistance in entering workplaces, vocational training, workshops covering employment preparation, life skills, financial education and more. About 360 teens utilized the program in 2018.
- **National service support program** - ELEM trains program managers at three NGOs that mentor at-risk youth who volunteer for national service.
- **Community activism** - Program for ELEM graduates to promote social change. There are groups in Tel Aviv and Jerusalem.

ELEM's employment and mentoring teams helped 980 young people in 2018, an increase of 8% over the preceding year.

85% continued in further training at the end of their program



Employment (45%)



Academic or other studies (32%)



Military or national service (29%)



54% young women, 43% young men, 3% transgender



64% over age 18



20% from the Arab community, a 20% increase over 2017

Central issues reported this year in employment and mentoring

- **24%** reported economic difficulties, gray-market loans, debt
- An **increase of 23%** in mentoring young people to help them access available social services
- **5%** of participants have committed sex offenses in the past and have been treated in sex offender treatment programs
- This year saw an increase in the number of young mothers who participated in the program. These young women shared difficulties they face in accessing benefits and social services in the community.
- The staff saw an increase in risk situations for young people who suffer learning disabilities or are diagnosed with impaired intellectual capabilities. This is largely evident in homelessness and in repeated sexual abuse among this population.

Age

19-21

597

16-18

238

22-26

39

14-15

35

12-13

2



Teens tell ELEM

Employment,
joining workforce

252

Violence

210

School, vocation, academics

207

National, military
service

192

Financial conduct, debts,
economic situation

184

Sexual violence

161

Sex and sexuality

153

Drug use

134

Social problems, loneliness

119

Alcohol use

116



EXTREME RISK

Program director: Reut Guy

753

Teens and young people

Gender

Teen girls,
young women



533

Teen boys,
young men



188

Transgender



44

Ethnicity

Veteran Israeli

320

French

131

Arab, Bedouin

105

FSU

46

Ethiopian

5

Other

35



Teens and young people facing extreme risk are generally cut off from family and peer support and from treatment. Most are forced to survive with virtually no resources due to their emotional and physical health, their life histories and their young age. They are excluded from public and professional discourse, difficult to locate and hard to connect with.

To address the lack of appropriate social services and difficulties in accessing existing services, ELEM's at-risk girls and extreme risk division provides services to teens and young people facing extreme risk who have faced sexual abuse, are sexually exploited or homeless. This division's staff and volunteers conduct outreach to identify, locate and intervene with sensitivity to this population. Some receive life-saving assistance while others begin long-term relationships with ELEM's programs including mentoring through change and re-entry into normative life.

In the extreme risk field, it has been found that there is often a relationship between long-term sexual abuse in childhood and complex life situations in adulthood. These situations are often characterized by symptoms of post-traumatic stress disorder and survival strategies that include alienation, loneliness, depression, suicidality, substance abuse, eating disorders, prostitution as a survival strategy and more.

ELEM's extreme risk teams helped 753 teens and young people at extreme risk in 2018, up 4% over 2017, including:

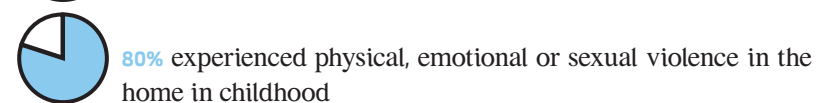
- 160 homeless young people in Jerusalem and Tel Aviv
- 556 sexually exploited teens and young people in Tel Aviv, Haifa, Eilat, Dimona, and Petach Tikva
- 37 teen girls and young women at a unique center in Tel Aviv for survivors of childhood sexual abuse



70% young women, 24% young men, 6% transgender



78% over age 18



80% experienced physical, emotional or sexual violence in the home in childhood

The underlying principles of work with teens and young people at extreme risk are, first and foremost, to provide visibility and recognition. In addition, this vulnerable population must be located and identified in public spaces such as on the street, in nightclubs, at hideaways, and on social media. In addition, it is important to reduce physical danger through preventing disease and death, and reduce emotional damage from the alienation and loneliness caused by life on society's margins. ELEM's interventions in life situations that require motivation for change are conducted with gender and cultural sensitivity.

Programs for teens and young people at extreme risk:

1. Sexually exploited youth: Halev 24/7, Tel Aviv; Alma, Petach Tikva;

Awake at Night, Eilat; Awake at Night, Haifa; Halev, Dimona

"One day while I was on my street corner, a young woman came to me with instant noodles and said 'Hi, can I talk to you for a moment?' I said to myself 'She must be yet another social worker who wants to help me. Right now it won't really help me. Right now I need money, I need a client, I need a bottle of vodka. And then a client came, so I hopped into the car, got the usual NIS 300 in my pocket. I finished. The young woman with the instant noodles was still there. She explained that if I wanted to eat, to rest, to shower, I can drop by their center. I dropped by on Wednesday. The same young woman with the instant noodles opened the door. She hugged me and I could smell good cooking smells from the kitchen. I saw a young guy doing laundry and a clean smell came from the shower. One young woman was sitting at the computer and another guy was playing a guitar and they were just smiling. I realized I was in a place where I was accepted for who I was."

A., graduate of Halev 24/7, Tel Aviv

In all walks of life and across all of Israel, there are teens and young people who are commercially sexually exploited. Some live at home and are in normative frameworks, while most of them (66%) have run away and are cut off from these frameworks. For these young people, prostitution is a survival strategy which exists in a range of locations: on the street, in discreet apartments, at nightclubs and bars, saunas and more. Another significant location for prostitution is online, a phenomenon we have seen grow substantially in recent years - both explicitly on sex sites and secretly on social media, in forums and chats and on ostensibly innocent dating sites.

ELEM runs five centers nationwide treating physical and emotional damage to sexually-exploited teens and young people. At these centers, staff and volunteers help them take back control of their lives, including building trust with a significant adult, providing alternatives to prostitution and additional measures geared to gradually entering normative life.



Age

19-21

301

22-26

132

16-18

110

14-15

34

12-13

1



Teens tell ELEM

Sexual violence

1,154

Violence

936

Alcohol use

413

Depression, anxiety

342

Homelessness

304

Runaways

296

Social problems, loneliness

286

Drug use

280

Sex and sexuality

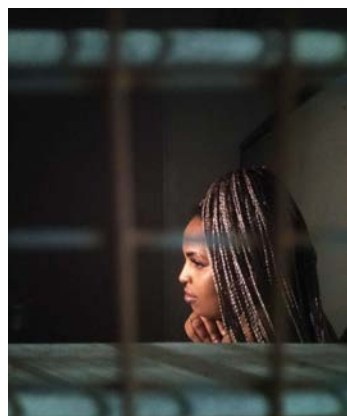
206

Crisis with parents

189

EXTREME RISK

Program director: Reut Guy



2. **A Real Home** - drop-in center for young women survivors of childhood sexual abuse

1 in 6 teen girls and young women in Israel experienced sexual abuse as girls or young women. There is a connection between childhood sexual abuse and post-traumatic symptoms, survival strategies, substance abuse, eating disorders and more.

"I came to ELEM's 'A Real Home' for survivors of sexual violence. There I found women, girls, and volunteers. They were there for me but I didn't speak their language. The truth is I didn't know how to speak at all. I wrote endless post-it notes, I cried and fell apart, I lay on the floor. And they were there with me, mostly listening and teaching me to speak. They taught me how to receive help, hugged without touching. And slowly, over time, I learn to control the two competing camps inside me: my body and my soul."

Y., A Real Home graduate



3. Programs for homeless young people: **Galgai, 24/7 shelter for homeless young women, Jerusalem; Someone to Run With, 24/7 shelter for homeless young men, Tel Aviv**

Homeless young people in Israel are disconnected from family and peer support and from treatment. They live without a stable roof over their heads. Many adopt physical and emotional survival tactics including criminal activity, prostitution and substance abuse.

"The bus to Jerusalem stopped at a place that probably changed my life, ELEM's shelter. Then, the shelter was emergency accommodation for homeless young women. I made sure to come every night, never skipping. That was my most sacred time. That place was my home. First of all and before anything, the change began within. I chose to move from surviving to living. As soon as I did that, many things began to happen. So slowly I started climbing back up to life. Choosing life every day. Today I do more than choose life, I live life."

T., graduate of ELEM's shelter for homeless young women, Jerusalem



ELEM has two centers for homeless young people: one in Jerusalem and one in Tel Aviv. These two shelters are open seven days a week. Activity at the centers includes locating young people and creating a connection with them, basic humanitarian assistance such as food, clothing, a hot shower and first aid. All these provide a respite from life on the streets and allow for treatment to reduce the damage inherent in homelessness through emotional assistance, medical treatment, and access to social benefits. When young people express desire and motivation for change, ELEM provides options for long-term rehabilitation.

SEXUAL ABUSE

Program director: Dr. Talia Etgar

"The most important thing I learned here is the quicksand. When I learned that, I learned how you can drown in the quicksand and how you can avoid drowning in the quicksand and how to get a crane that will lift you out of the quicksand. From telling the truth, I learned how not to abuse again."

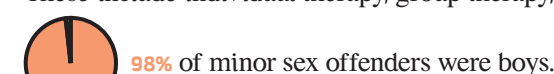
A., a young sexual offender

Israeli society, like society the world over, has trouble accepting that there are minors who sexually abuse others. There is little awareness of the issue. Dealing with the issue, its scope, and ways to treat it is relatively marginalized. ELEM believes that treating minor offenders at a young age is significant. The younger the treatment starts, the greater the chances for success. Sexual violence can be reduced and we as a society must do everything in our power to prevent it and prevent harm to thousands of future victims

ELEM's sexual abuse division treats minor sex offenders as well as minor victims of sexual abuse and their families.

In 2018, the division received 745 requests, an increase of 5% over 2017. The minors were treated at ELEM's centers in Tel Aviv, Shefaram, Afula and Beit Shean.

Work with minor sex offenders is predicated on a treatment program tailored to each patient's needs, using innovative professional techniques. These include individual therapy, group therapy, and family therapy.



- There has been an increase in requests to treat extremely young offenders and victims, aged 4-7.

Treatment for minor sex offenders includes clinical treatment as well as parental counseling which are both important factors in treatment.

- Teen girls were twice as likely to experience sexual abuse as teen boys
- In 2018, ELEM saw an increase in the severity of abuse, in other words more instances of severe sexual violence and more instances of abuse by a family member.

In addition, ELEM conducts group therapy for teen boy sex offenders facing criminal proceedings through probation services or through youth protective services. **In 2018, ELEM conducted 23 such groups nationwide** with each group led by two professionals.

Sex abuse hotline: 03-6477898

ELEM operates a hotline to assist parents, educators, therapists and school counselors. The hotline is operated by trained volunteers and managed by a professional.

745
Referrals treated

Gender

Boys



273

Girls



92

Transgender



0

Age

12-18

265

12 and under

52



TRAINING AND KNOWLEDGE MANAGEMENT

Program director: Amir Deloumi

ELEM's training and knowledge management division is responsible for developing the organization's professional expertise, clinical training for staff, making the knowledge accessible organization-wide. These are done alongside data collection, documentation and evaluation.

Central issues in 2018:

• **ELEM provided 250 hours a month of professional training and workshops for staffers**, which were conducted by seven clinical trainers for the rest of ELEM staff. This is designed to support staffers' professional development and learning in order to expand and improve ELEM's work with teens and young people.

- **Professional development** - The department conducted or assisted in workshops covering: training techniques, sexual abuse, group therapy, and creating intervention models for ELEM staff.
- **Improving documentation, evaluation and metrics** - All ELEM projects track participants and programs using ELEM's CRM system.
- **Improving ELEM's online presence** - this year, ELEM's intra-organizational portal was revamped. All professional expertise and procedures were made more accessible to all ELEM staff.
- **Implementing Ethics Code** - in 2018, ELEM implemented an organization-wide ethics code, which was approved and implemented following a two-year process.

TRAINING SERVICES

Program director: Naama Weiner

With 35 years experience with at-risk teens and young people, ELEM is a pioneer and a leader in professional expertise. ELEM's direct connection with a broad range of teens on the risk spectrum enables our professional staff to develop a deep understanding of the target population and constantly evolving and creative methodologies.

Based on ELEM's vast experience and expertise, we regularly train counselors who meet at-risk teens and young people. ELEM's training staff are ELEM's own treatment and education professionals, as well as social workers, criminologists, and others. These professionals are also field workers specializing in work with at-risk and vulnerable populations.

ELEM conducts training days, lectures, workshops, professional development and seminars for various other social service organizations.

Central accomplishments in 2018:

1. Branding ELEM in Israel and abroad as a professional entity with expertise in the area of at-risk teens and young people. In 2018, ELEM staffers met with professionals from outside the organization in order to provide professional training on a range of subjects. ELEM also conducted training for professionals from many foreign countries as part of courses organized by the Foreign Affairs

Ministry and universities. These collaborations were productive and continued, and even produced a visit by a delegation from a US organization, as well as training for delegations from India, France, Spain and more.

2. In 2018, ELEM provided more than 550 training hours to outside organizations such as the Education ministry, the Social Services ministry, the central social services training school, prison services, entities such as "City Without Violence," the Anti-Drug Authority, school guidance counselors in the religious school system, colleges, local governments and a variety of other entities.

Training topics

| | |
|-----|--|
| 25% | Training for professionals |
| 15% | At-risk teens and young people |
| 10% | Streetwork: principles of outreach on the street, identification, location and treatment |
| 10% | Prevention and treatment of substance abuse |
| 10% | Characteristics of risk and means of intervention |
| 8% | Healthy sexuality and sexual abuse |
| 7% | Informal treatment spaces |
| 5% | Online intervention |
| 5% | Work with multicultural teens |
| 5% | Work with ultra-Orthodox teens |

STAFF AND HUMAN RESOURCES

Human resources manager: Leah Prizant Adler

ELEM employs 285 staff members with a variety of professional backgrounds: social work, education, psychology, criminology and more.

ELEM's staff reflects Israeli society, rural and outlying areas, central Israel, the Arab and ultra-Orthodox sectors and other sectors and all are treated with cultural sensitivity by the organization's human resources department. ELEM promotes equality and women's leadership. The executive director, president and 70% of the organization's staff are women. ELEM's 2,000 volunteers - working hand-in-hand with our professional staff - are essential to ELEM's mission. The organization devotes a division to the care and professional development of our committed volunteers.

ELEM's human capital is extremely important. The organization therefore nurtures a structure of training and workshops at all levels of the organization, as well as providing ongoing mentoring and knowledge preservation in order to help staff in their work. ELEM's human resources department promotes a number of professional elements, interviewing and recruiting procedures, creation of annual professional development programs including course for new staff and courses on a variety of subjects. In addition, staffers receive regular feedback and evaluations and managers and human resources staff work hard to build a strong sense of teamwork and camaraderie.



Board of directors

Shlomo Yanai - Chair
Ann Bialkin - Chair, ELEM USA
Lenore Ruben - President, ELEM USA
Prof. Amnon Lazar

Dalia Narkis
Talia Ze'evi
Dr. Miriam Golan
Nadav Grinshpon
Ofer Azuz
Eden Fuchs
Fran Katz
Menachem Shalgi
Rachel Sharvit
Yitchak Scheinfeld

President of ELEM

Nava Barak

Audit Committee

Joseph Shetach- Chair
Udi Nevo
Harel Cohen
Shmuel Glayznor
Tomer Cohen
Yaki Atar- Internal Auditor

Finance Committee

Ofer Azuz- Chair
David Broder
Nadav Grinshpon
Ada Ronen
Ya'acov Haimowitz

Professional Committee

Professor Amnon Lazar- Chair
Dr. Aharon York
Dr. Gila Amitai
Hayuta Shenbel
Dr. Miriam Golan
Professor Nati Ronel
Eden Fuchs
Professor Riki Soya
Professor Shlomo Romi
Shmuel Hason
Zohar Hamo
Rachel Sharvit
Nahum Michaeli
Michal Komem
Eynat Veger-Atias
Ayala Steinfeld-Kochan
ELEM USA:
Lenore Ruben
Bonnie Jackson

ELEM USA

Lenore Ruben

Volunteerism Committee

Dr. Aharon York- Chair
Leora Arnon
Meirav Levi
Inbar Goldman
Sigal Friedman
Dr Galit Venture

RESOURCE DEVELOPMENT

Director: Tali Erez

ELEM's resource development department develops revenue sources and raises funds for Israel's at-risk teens and young people. ELEM's donors include corporations, individuals, local and foreign foundations, as well as the general public which participates in fundraising campaigns and volunteer activities.

As we celebrate ELEM's 35th anniversary, we are grateful to our many donors, partners and supporters, some of whom have devoted years to ELEM's efforts to help at-risk teens and young people.

Major fundraising events in 2018:

Annual event - At ELEM's moving annual gala, we celebrated 35 years of activity with the leadership of Israel's business sector, and with partners and donors over the years. At the gala, ELEM presented founders Ann and Kenny Bialkin with a Lifetime Achievement Award.

At the gala, ELEM graduate Tehila spoke about her journey to empowerment and her special connection with ELEM volunteers. The audience was also treated to performances by comedienne Adi Ashkenazi and singers Keren Peles and Rami Kleinstein.

Annual Flags fundraising campaign led by ELEM President Nava Barak - ELEM thanks the dozens of corporations, businesspeople and partners who joined this major campaign.

The annual campaign included:

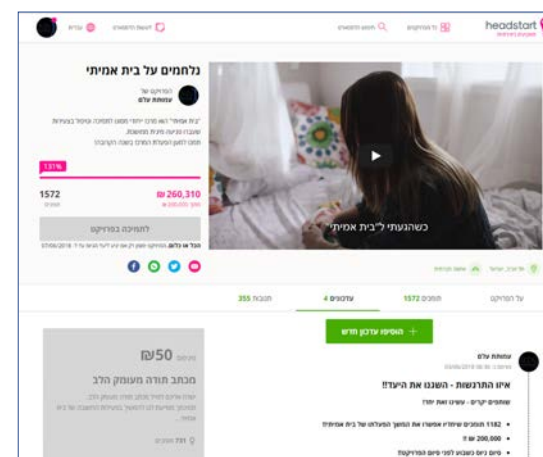
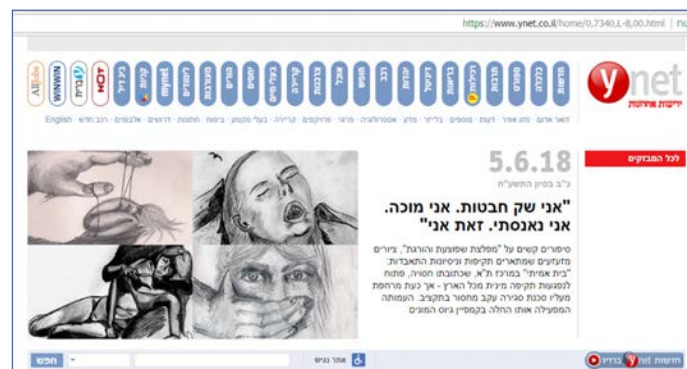
- **Crowdfunding** - ELEM conducted a crowdfunding campaign to support the continued operation of A Real Home.

A Real Home is a unique drop-in center for young women survivors of childhood sexual abuse. The extremely successful campaign reached more than 130% of its original target for fundraising from the general public. ELEM would like to thank the donors and volunteers who raised funds and rewards for this project.

- **ELEM's Annual Report** - the highpoint of the Flags campaign is the presentation of the organization's annual report to the President of Israel, Mr. Reuven Rivlin. The report was presented by ELEM chairman Shlomo Yanai, President Nava Barak and Executive Director Inbal Dor Kerbel.

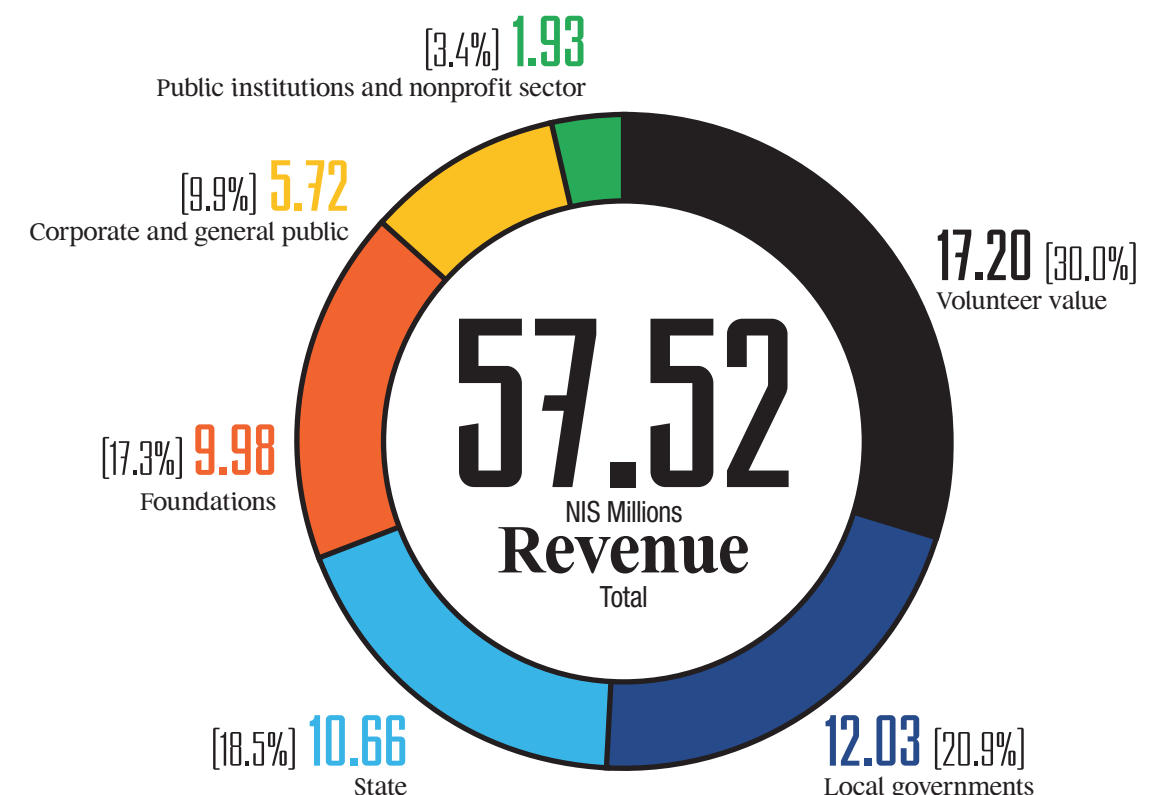
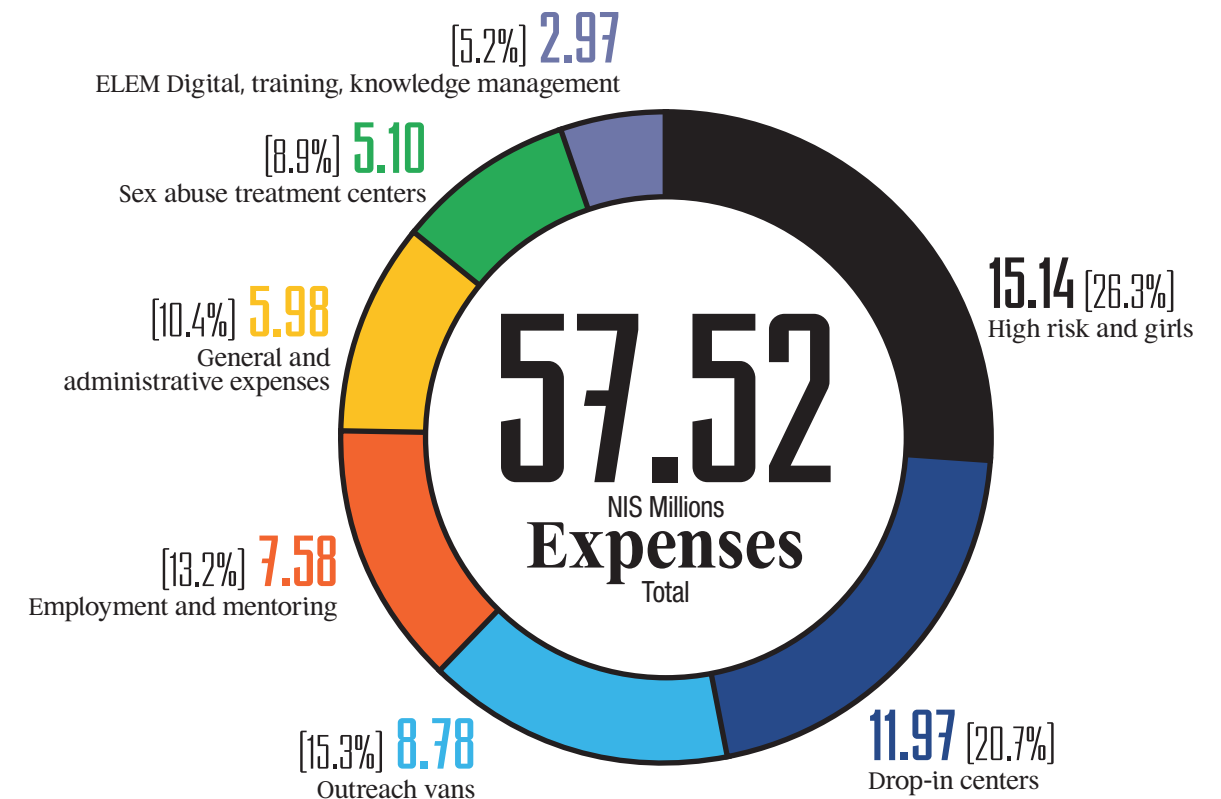
ELEM Race - ELEM's eighth annual race was held this year together with Holon city hall and headed by Holon Mayor Moti Sasson. Teens and graduates of various ELEM projects and corporate running groups represented ELEM in the race, along with competitive athletes, soldiers, schoolchildren and ELEM's own staff and volunteers. All the funds raised support the operation of ELEM's projects nationwide.

Press and social media - ELEM's resource development department is responsible for improving awareness about ELEM and our work for at-risk teens and young people, part of the organization's efforts to raise visibility and place these vital issues on the public agenda. Over the course of 2018, ELEM received widespread supportive coverage with more than 200 items across all forms of media and social media.



EXPENSES AND INCOME

ELEM 2018, in NIS millions



DONORS AND PARTNERS IN 2018



Mrs. And Mr. Varda
and Boaz Dotan



קרן בוקסבאום נטע (ח"צ)



Eliashar
Family

בנק הפועלים



Ann and Kenneth
Bialkin

Mrs. And Mr.
Ahuva and Shlomo Yanai



ARKIN HOLDINGS



Dan Geva
Lawyers



קרן יוסף
וקריסטנה קסירד



ADAMA
Agricultural Solutions



Max and Bessie
Bakal Foundation



Lenore
Ruben



Ilan Cohen

Eldan

Altshuler Shaham
Investment House

Mrs. and Mr. Talia and
Gad Zeevi

Gazit-Globe

First International
Bank of Israel

Coca Cola Israel

Chaim Tzach

Hanoch Dovrat

Union Motors

In Memory of
Maychor Ya'acov -
Trustee: Joseph Bar-
Natan

Melisron Ltd.

Menora Mivtachim
Holdings Ltd.
Menachem Shalgi

Zakai Family Trustee

Nadav and Iris
Grinshpon

Somoto

Clal Insurance
Enterprises Holdings
Ltd. Group

HSBC

Wix

Yes

Jewish Federation Of
Metropolitan Chicago

Aviad Foundation

IMPACT!

Keren Hayesod

Yahel Foundation

Peretz Naftali
Foundation

Help Jews Home

Jewish Federation of
Greater Kansas City

Glencore Society
for Education and
Welfare

The Abraham
Gertzman Fund

The Sharon Houminer
Foundation

Bar Ilan University

Aroma Espresso Bar

Babcom Centers

Theaters LTD

Galai PR

Sherut Leumi

The Hebrew
University of
Jerusalem

Sapir Academic
College

IDC Herzliya College

Ministry of Religious
Services

The Association of
Rape Crisis Centers in
Israel

Ministry of Defense

Ministry of Health

Ministry of Economy
and Industry

Ministry of
Construction and
Housing

Aminadav

Shlomit

Tapuz Portal

HESEG Foundation

Bisan Family
Foundation

Ravit Asaf
Professional Beauty
Academy

Avram and Gail
Friedman

Charlotte Frank

Craig and Yosefa Platt

Daniel Krueger

Edward Blank

Frances Katz

George Blumenthal

Goldman Sachs & Co.

Halis Family
Foundation

Howard and Rochelle
Kivell

Ira and Inge Rennert

Judy Fein
Lee Gottlieb Fund

Lisa Lippman

Lori Gosset
Magda and Edward
Bleier/Dana
Foundation

Mr. & Mrs. Niko
Elmaleh

Omri Amit

Skadden Arps Slate
Meagher & Flom LLP
Starr Foundation

The Charitable Trust
Under the Will of
Louis Feil

The David and Fela
Shapell Family
Foundation

The Gary Saltz
Foundation

The Hittman Family
Foundation

The Jeffrey A. Altman
Foundation

The Joseph H. Flom
Foundation

The Sharon Houminer
Foundation

Thomas Clougher

Walter and Elizabeth
Stern



President Reuven Rivlin, center, with Nava Barak, Shlomo Yanai, Inbal Dor Kerbel and ELEM graduates



High risk field's volunteer appreciation event



Nava Barak, Shlomo Yanai, Inbal Dor Kerbel handing ELEM's Annual Report for 2017 to Israel President Reuven Rivlin



MK Orly Abekasis-Levy, Ms Tzippi Nachshon Glick of social services, Nava Barak, Inbal Dor Kerbel and Reut Guy at "A Real Home"



MK Meirav Ben-Ari with Inbal Dor Kerbel and Nava Barak



Keter Plastics owner Sami Sagol and Nava Barak at ELEM gala



Chairman Shlomo Yanai, President Nava Barak, Executive director Inbal Dor Kerbel and ELEM USA president Lenore Ruben presenting ELEM founders Ann and Kenny Bialkin with the ELEM Lifetime Achievement Award



ELEM beneficiaries, staff and volunteers at ELEM Race 2018



Nava Barak, Inbal Dor Kerbel and the founders of ELEM Race



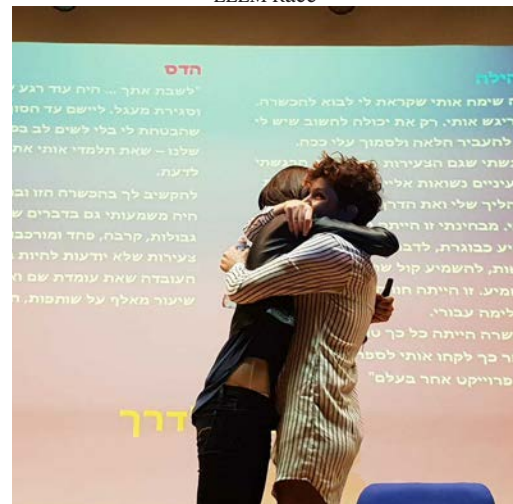
Ann and Kenny Bialkin with Zvi Neta, chair of Neta-Boxenbaum Foundation



Israel Discount Bank CEO Lilach Asher-Topilsky and husband Mark with Nava Barak and Inbal Dor Kerbel



ELEM teens, staff and volunteers at ELEM Race 2018



ELEM staffer and graduate at annual conference

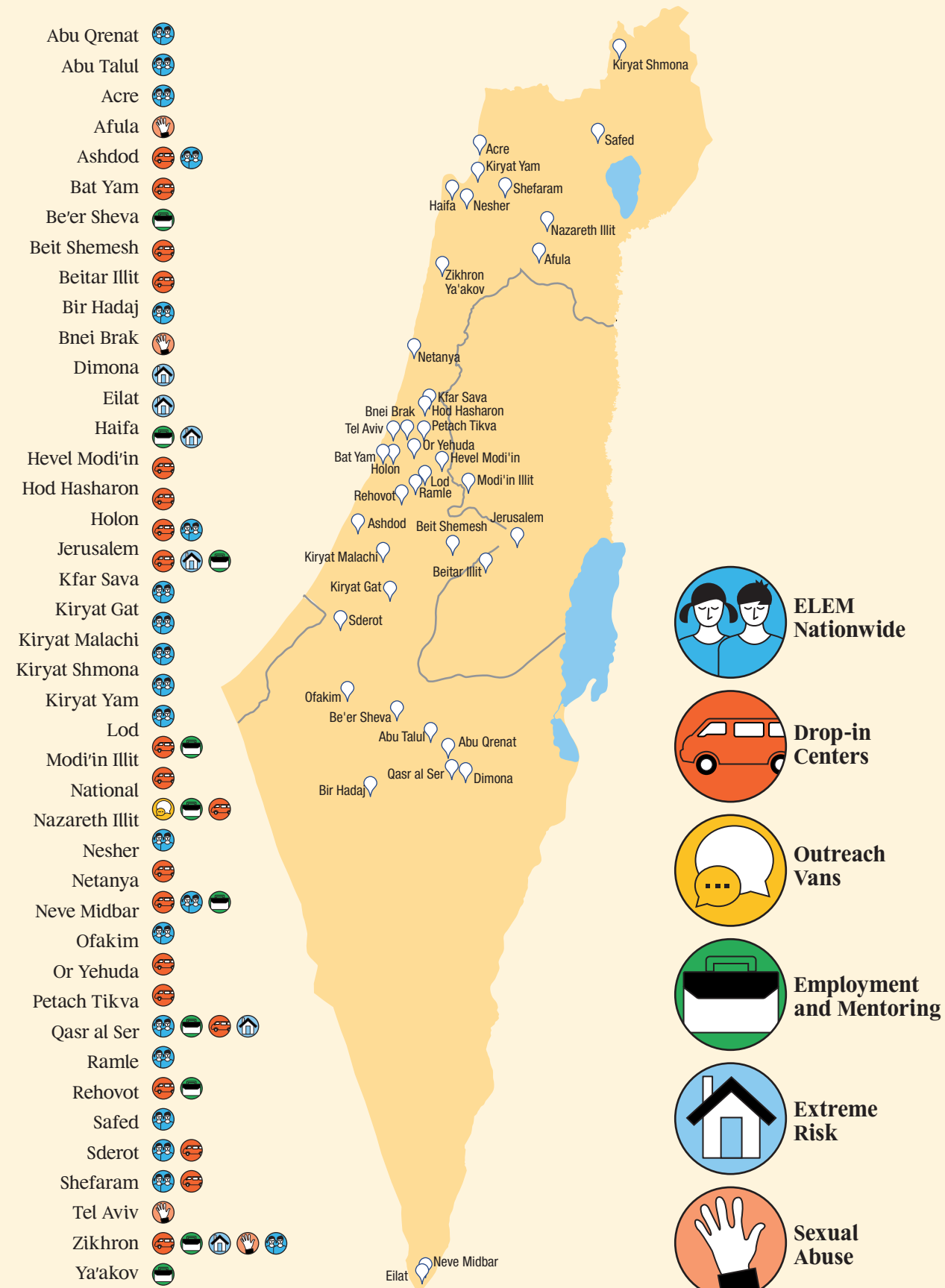


Nava Barak attending the ceremony awarding the Genesis Prize to organizations dedicated to empowering women



Former Bank Hapoalim chairman Yair Saroussi, Social Services director-general Avigdor Kaplan and Inbal Dor Kerbel

PROJECTS MAP





ELEM - Youth in Distress

35 Hayarkon Street, Bnei Brak 5120423 | Tel: 972-3-7686666 | Fax: 972-3-6470319

For more information or to make a donation: www.elem.org.il